



Fraction Battle Instructions

Fraction Dice Mode

Gather one or more friends and divide into two groups. Cut out and fold two fraction dice. To play the game, each group takes turns rolling both dice and recording their fraction on one side of the Fraction Battle Score Sheet. The smallest number goes on top and the biggest number goes on the bottom for each roll. (The Scout Elf School icon counts as any number you choose, between 1 and 4.) Work together to figure out which group's fraction is larger and circle it. The group with the most fractions circled when all the spaces are full wins the battle!

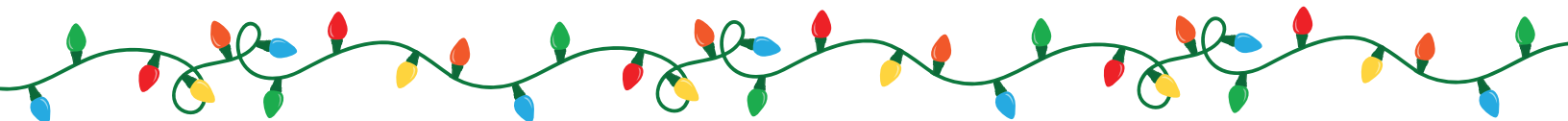
Fraction Battle Cards Mode

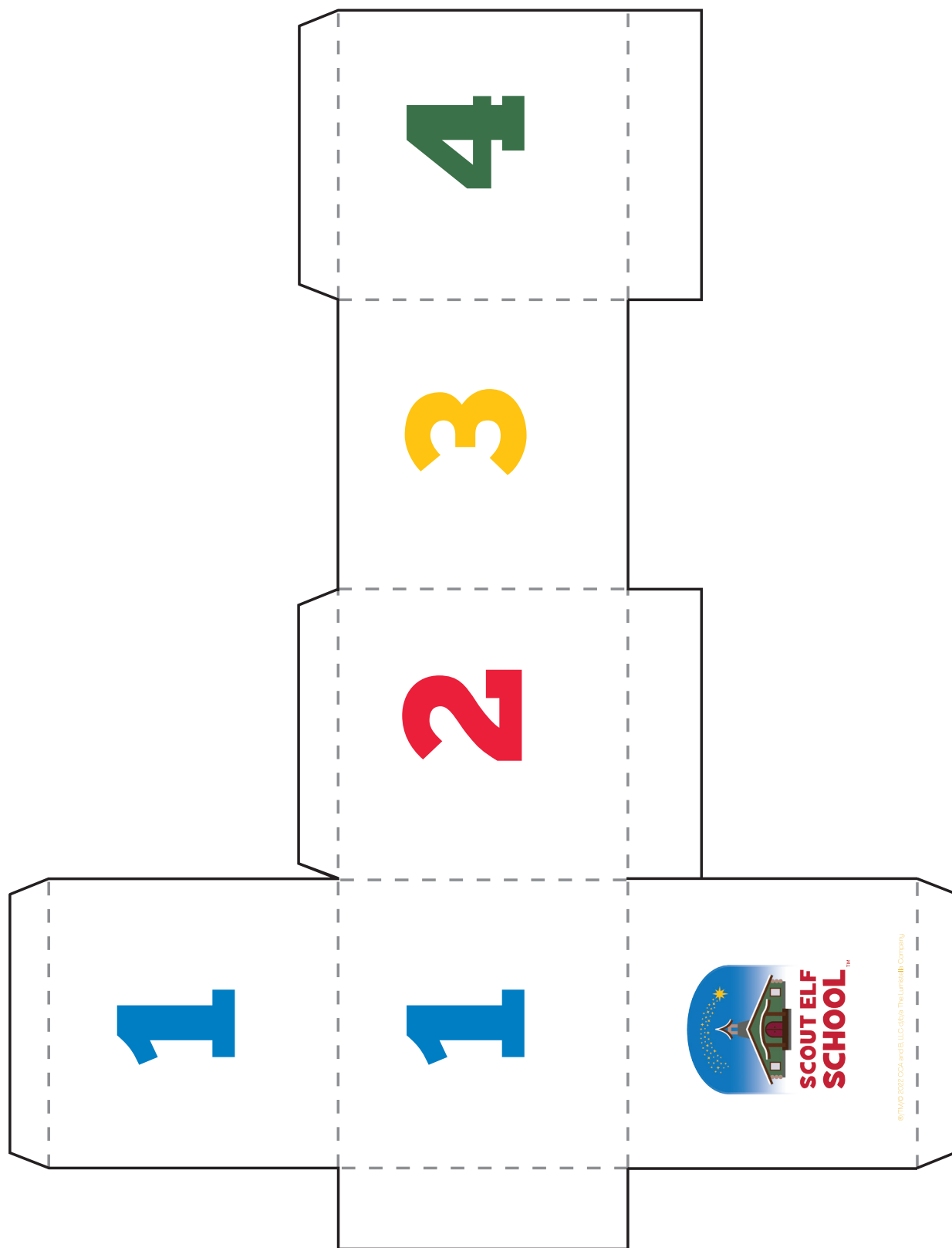
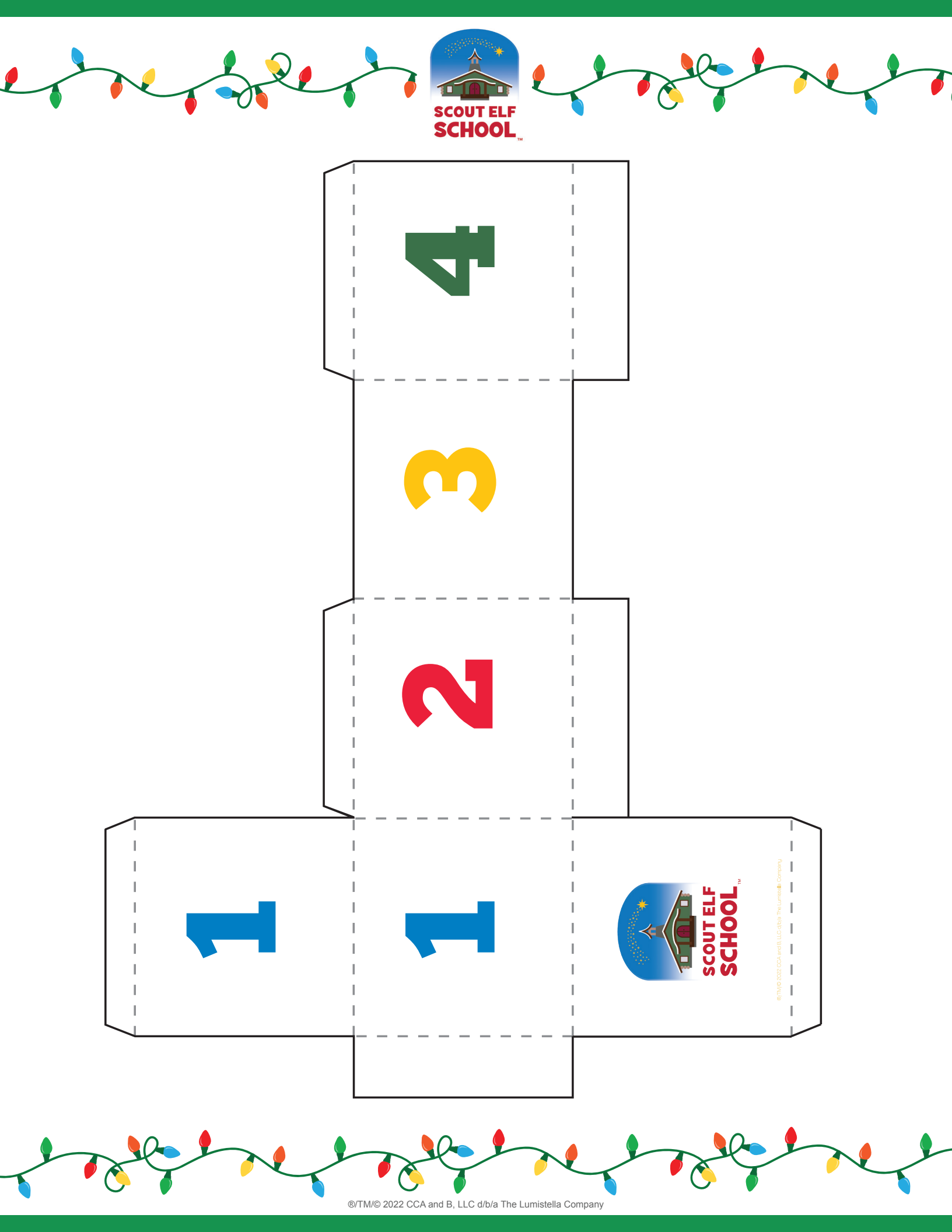
Shuffle cards and divide them evenly between you and a friend. Place two pencils on the table - one for each player - to separate the numerator (top number) and denominator (bottom number) as you take turns drawing two cards from your own decks. Place the cards you draw above and below your pencil to make a fraction. The player with the largest fraction on each draw wins all four cards. Play until one player has all the cards to win the battle!



Fraction Battle Score Sheet







©/TM/© 2022 CCA and B, LLC d/b/a The Lumistella Company

1





SCOUT ELF SCHOOL



SCOUT ELF SCHOOL

1

©TM/© 2022 CCA and B, LLC dba/ The Lumatella Company

2





SCOUT ELF SCHOOL



SCOUT ELF SCHOOL

2

©TM/© 2022 CCA and B, LLC dba/ The Lumatella Company

1





SCOUT ELF SCHOOL



SCOUT ELF SCHOOL

1

©TM/© 2022 CCA and B, LLC dba/ The Lumatella Company

2





SCOUT ELF SCHOOL



SCOUT ELF SCHOOL

2

©TM/© 2022 CCA and B, LLC dba/ The Lumatella Company

1





SCOUT ELF SCHOOL



SCOUT ELF SCHOOL

1

©TM/© 2022 CCA and B, LLC dba/ The Lumatella Company

2





SCOUT ELF SCHOOL



SCOUT ELF SCHOOL

2

©TM/© 2022 CCA and B, LLC dba/ The Lumatella Company

1





SCOUT ELF SCHOOL



SCOUT ELF SCHOOL

1

©TM/© 2022 CCA and B, LLC dba/ The Lumatella Company

2





SCOUT ELF SCHOOL



SCOUT ELF SCHOOL

2

©TM/© 2022 CCA and B, LLC dba/ The Lumatella Company



3

3

©TM/© 2022 CCA and B, LLC d/b/a The Lumatella Company



4

4

©TM/© 2022 CCA and B, LLC d/b/a The Lumatella Company



3

3

©TM/© 2022 CCA and B, LLC d/b/a The Lumatella Company



4

4

©TM/© 2022 CCA and B, LLC d/b/a The Lumatella Company



3

3

©TM/© 2022 CCA and B, LLC d/b/a The Lumatella Company



4

4

©TM/© 2022 CCA and B, LLC d/b/a The Lumatella Company



3

3

©TM/© 2022 CCA and B, LLC d/b/a The Lumatella Company



4

4

©TM/© 2022 CCA and B, LLC d/b/a The Lumatella Company

5



SCOUT ELF SCHOOL

5

©TM/© 2022 CCA and B, LLC dba/ The Lumatella Company

6



SCOUT ELF SCHOOL

6

©TM/© 2022 CCA and B, LLC dba/ The Lumatella Company

5



SCOUT ELF SCHOOL

5

©TM/© 2022 CCA and B, LLC dba/ The Lumatella Company

6



SCOUT ELF SCHOOL

6

©TM/© 2022 CCA and B, LLC dba/ The Lumatella Company

5



SCOUT ELF SCHOOL

5

©TM/© 2022 CCA and B, LLC dba/ The Lumatella Company

6



SCOUT ELF SCHOOL

6

©TM/© 2022 CCA and B, LLC dba/ The Lumatella Company

5



SCOUT ELF SCHOOL

5

©TM/© 2022 CCA and B, LLC dba/ The Lumatella Company

6



SCOUT ELF SCHOOL

6

©TM/© 2022 CCA and B, LLC dba/ The Lumatella Company





9





6

©TM/© 2022 CCA and B, LLC d/b/a The Lumatella Company



10





01

©TM/© 2022 CCA and B, LLC d/b/a The Lumatella Company



9





6

©TM/© 2022 CCA and B, LLC d/b/a The Lumatella Company



10





01

©TM/© 2022 CCA and B, LLC d/b/a The Lumatella Company



9





6

©TM/© 2022 CCA and B, LLC d/b/a The Lumatella Company



10





01

©TM/© 2022 CCA and B, LLC d/b/a The Lumatella Company



9





6

©TM/© 2022 CCA and B, LLC d/b/a The Lumatella Company



10





01

©TM/© 2022 CCA and B, LLC d/b/a The Lumatella Company