



# Battaglia delle Frazioni

## Istruzioni

### Dado con le Frazioni

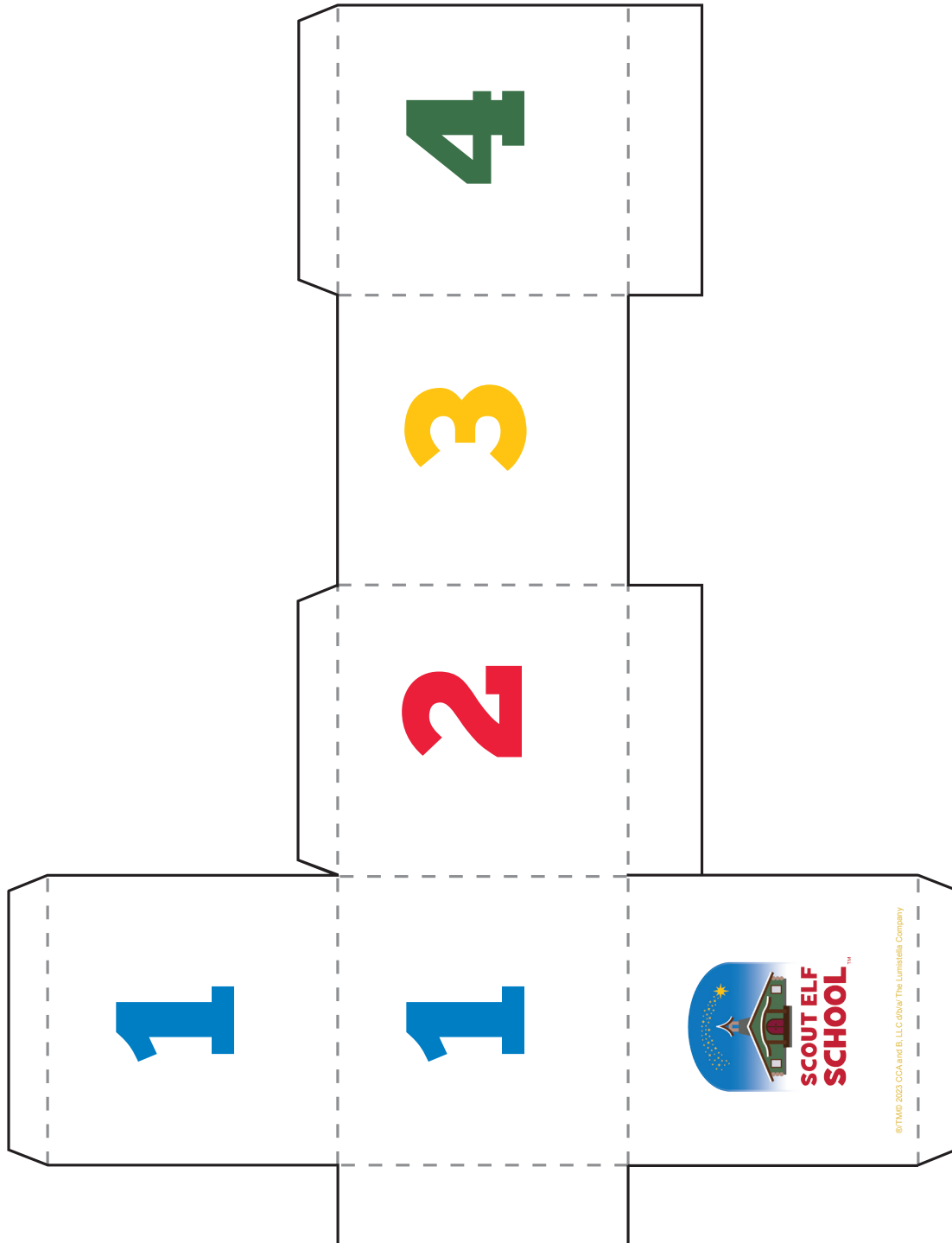
Riunisci alcuni amici e formate due squadre. Utilizzando il foglio di lavoro stampabile, tagliate e piegate i lati per ottenere due dadi con le frazioni. Il gioco consiste nel far tirare i dadi, a turno, ad ogni giocatore, segnando il punteggio ottenuto con le frazioni sul foglio segnapunti. Ad ogni turno, scrivete il numero più basso nella parte alta del segnapunti mentre quello più alto in fondo (*il simbolo della scuola dello Scout Elf vale qualsiasi numero dall'1 al 4*). Alla fine di ogni turno, calcolate insieme il punteggio frazione più alto e cerchiatelo. La squadra che ottiene più cerchi sui punteggi vince la battaglia.

### Battaglia delle Carte con le Frazioni

Mischia le carte e dividile equamente tra te ed un amico. Metti due matite sul tavolo, una per giocatore, per separare il numeratore (*numero sopra*) dal denominatore (*numero sotto*). A turno, girate due carte dal vostro mazzo. Posizionate le carte che girate sopra e sotto la matita per creare una frazione. Il giocatore con la frazione più alta, ad ogni pescata, vince tutte e 4 le carte. Il gioco termina quando un giocatore ha vinto tutte le carte e la battaglia!



# Dado con le Frazioni





1



1

SCOUT ELF SCHOOL

©TM/© 2023 CCA and B, LLC d/b/a The Lumatella Company

This card features a yellow border and a large yellow number '1' in the top-left and bottom-left corners. The central image is a split-panel illustration of two elf scouts. The left panel shows a scout in a purple suit and red hat with glasses, standing in a snowy forest. The right panel shows a scout in a green suit and red hat, standing against a starry night sky. The Scout Elf School logo is in the top-right and bottom-right corners.

2



2

SCOUT ELF SCHOOL

©TM/© 2023 CCA and B, LLC d/b/a The Lumatella Company

This card features a yellow border and a large yellow number '2' in the top-left and bottom-left corners. The central image is a split-panel illustration of two elf scouts. The left panel shows a scout in a purple suit and red hat with glasses, standing in a snowy forest. The right panel shows a scout in a green suit and red hat, standing against a starry night sky. The Scout Elf School logo is in the top-right and bottom-right corners.

1



1

SCOUT ELF SCHOOL

©TM/© 2023 CCA and B, LLC d/b/a The Lumatella Company

This card features a yellow border and a large yellow number '1' in the top-left and bottom-left corners. The central image is a split-panel illustration of two elf scouts. The left panel shows a scout in a purple suit and red hat with glasses, standing in a snowy forest. The right panel shows a scout in a green suit and red hat, standing against a starry night sky. The Scout Elf School logo is in the top-right and bottom-right corners.

2



2

SCOUT ELF SCHOOL

©TM/© 2023 CCA and B, LLC d/b/a The Lumatella Company

This card features a yellow border and a large yellow number '2' in the top-left and bottom-left corners. The central image is a split-panel illustration of two elf scouts. The left panel shows a scout in a purple suit and red hat with glasses, standing in a snowy forest. The right panel shows a scout in a green suit and red hat, standing against a starry night sky. The Scout Elf School logo is in the top-right and bottom-right corners.

1



1

SCOUT ELF SCHOOL

©TM/© 2023 CCA and B, LLC d/b/a The Lumatella Company

This card features a yellow border and a large yellow number '1' in the top-left and bottom-left corners. The central image is a split-panel illustration of two elf scouts. The left panel shows a scout in a purple suit and red hat with glasses, standing in a snowy forest. The right panel shows a scout in a green suit and red hat, standing against a starry night sky. The Scout Elf School logo is in the top-right and bottom-right corners.

2



2

SCOUT ELF SCHOOL

©TM/© 2023 CCA and B, LLC d/b/a The Lumatella Company

This card features a yellow border and a large yellow number '2' in the top-left and bottom-left corners. The central image is a split-panel illustration of two elf scouts. The left panel shows a scout in a purple suit and red hat with glasses, standing in a snowy forest. The right panel shows a scout in a green suit and red hat, standing against a starry night sky. The Scout Elf School logo is in the top-right and bottom-right corners.

1



1

SCOUT ELF SCHOOL

©TM/© 2023 CCA and B, LLC d/b/a The Lumatella Company

This card features a yellow border and a large yellow number '1' in the top-left and bottom-left corners. The central image is a split-panel illustration of two elf scouts. The left panel shows a scout in a purple suit and red hat with glasses, standing in a snowy forest. The right panel shows a scout in a green suit and red hat, standing against a starry night sky. The Scout Elf School logo is in the top-right and bottom-right corners.

2



2

SCOUT ELF SCHOOL

©TM/© 2023 CCA and B, LLC d/b/a The Lumatella Company

This card features a yellow border and a large yellow number '2' in the top-left and bottom-left corners. The central image is a split-panel illustration of two elf scouts. The left panel shows a scout in a purple suit and red hat with glasses, standing in a snowy forest. The right panel shows a scout in a green suit and red hat, standing against a starry night sky. The Scout Elf School logo is in the top-right and bottom-right corners.

